



Homeless Navigation Center

November 15, 2022

Resident Advisory Working Group

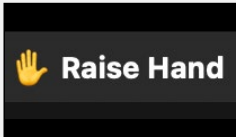




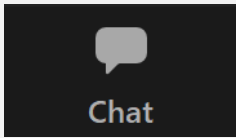
Overview of Zoom Features



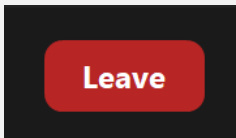
Please remain muted unless you are speaking to reduce background noise.



Please use the Raise Hand feature to indicate you'd like to speak.



Participants can use the Chat feature to add comments or questions without unmuting.



Participants can leave the meeting at any point.

If you have having difficulty with your Zoom functions, please notify us in chat or send an email to homelessness.solutions@lesardevelopment.com so we can troubleshoot.



Agenda

- Welcome/ Review Agenda
- Q&A Follow-Up
- Trauma-Informed Design
- Overview of Internal Buildings 8 and 24
 - Presentation
 - Breakout Session
- Wrap Up/ Questions & Clarifications



Q&A Follow-Up



Questions from Inbox

1. What is MVK's current model?
2. How does the Housing First model play out on the ground, particularly around substance use?
3. How does Governor Newsom's recent decision to "reject all homeless action plans" affect the Navigation Center?
4. What is the typical street outreach process in Palm Springs? What is the process when someone is not ready to accept services?



Trauma-Informed Design



Trauma-Informed Design

Trauma: “an event, series of events, or set of circumstances experienced by an individual as physically or emotionally harmful or life-threatening with lasting adverse effects on the individual’s functioning and mental, physical, social, emotional, or spiritual well-being” (SAMHSA)



Trauma-Informed Design

Trauma-Informed Care: aims to provide services in ways that are appropriate, supportive, and welcoming for those who may have been affected by trauma.

- Recognize the wide-spread nature of trauma and its effects
- Understand the potential opportunities for recovery and healing
- Identify signs and symptoms of trauma in clients, residents and other members of the system
- Integrate trauma-related knowledge and information into policies, practices, procedures, and settings



Trauma-Informed Design

Trauma-Informed Design: create environments that promote a sense of calm, safety, dignity, empowerment, and well-being for all occupants.

- Spatial Layout
- Furniture
- Visual Interest
- Light & Color
- Art
- Plants/Biophilic Design
- Community



Buildings 8 and 24

Review of Overall Campus Design



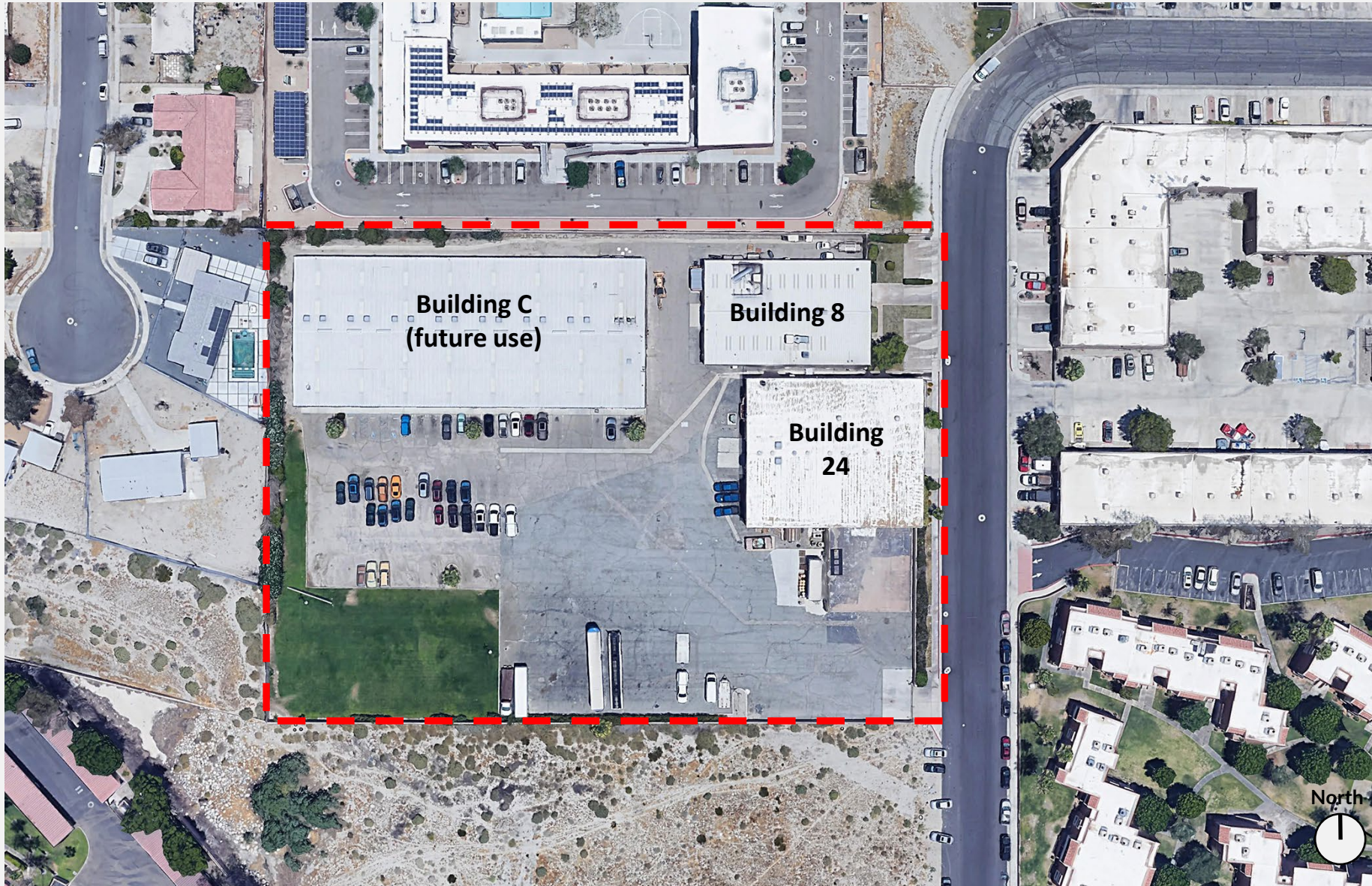
Design Opportunities

Architecture:

1. Create a welcoming environment that is dignified and safe. A safe internal environment will enhance community safety.
2. Design landscape to create a secure, beautiful buffer between the Navigation Center and its neighbors.
3. Design circulation patterns to promote safety and transparency. A transparent environment is a safer environment.
4. Create opportunities in the campus to celebrate creativity and to engage community volunteers.

Landscape:

1. Provide shade for residences and at gathering areas.
2. Provide evergreen screening vegetation to soften views from outside.
3. Create an attractive, well maintained, and neighborly perimeter.
4. Develop a low-maintenance and water-conserving plant palette with California natives and climate-adapted species.



Current Site Plan

Building C
(future use)

Shaded Area

Building 8

Building 24

Shaded Quiet Area

Basketball

Kids Area

Dog Run

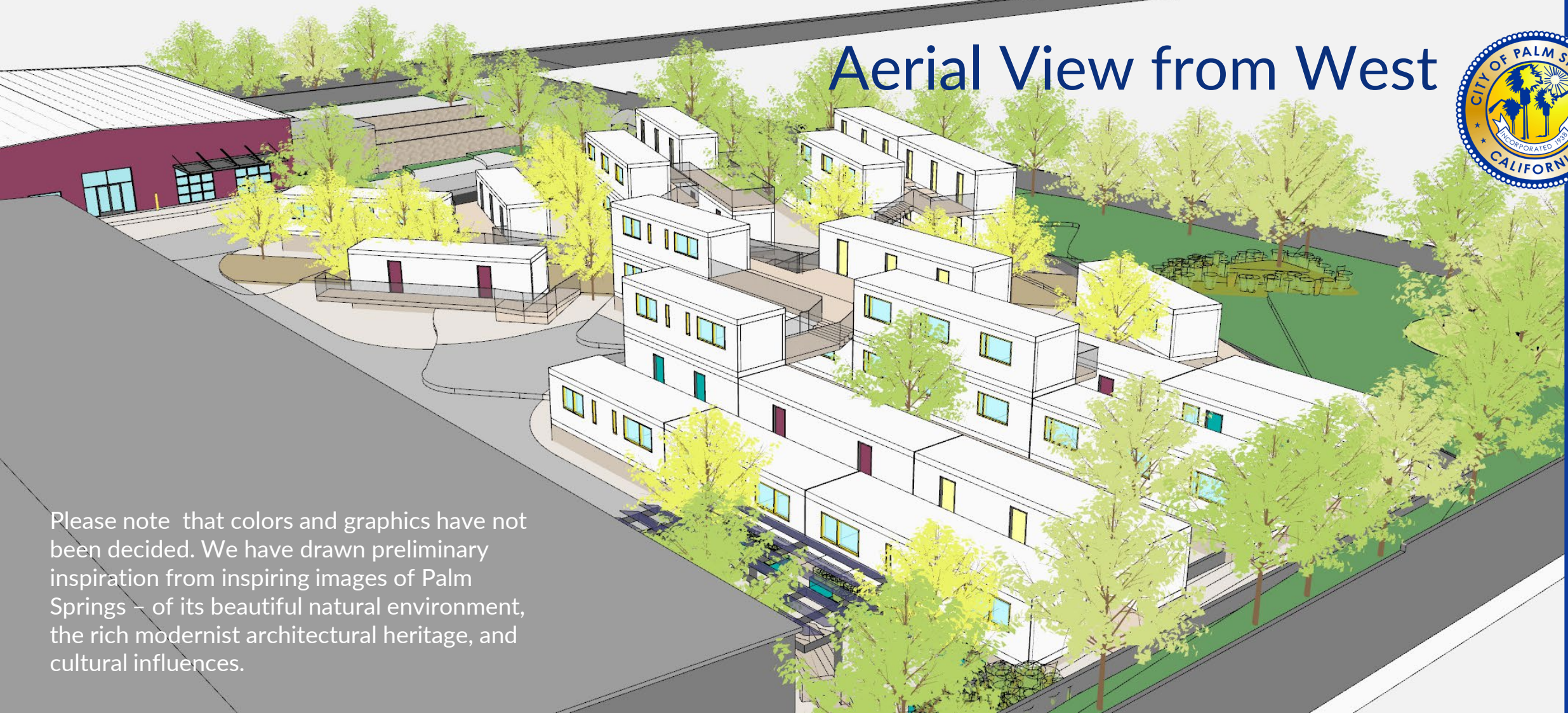
North

LEGEND

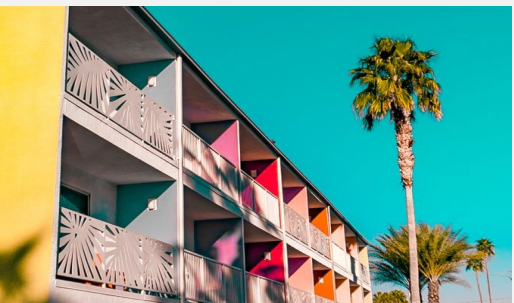
- TWO STORY
- ONE STORY
- PUBLIC ART
- PUBLIC ART
- EXIST. WALL/FENCE
- NEW WALL/FENCE
- PEDESTRIAN
- PARKING
- TRUCK LOADING
- LARGE SHADE TREE
- LARGE SCREENING TREE
- MEDIUM SHADE TREE
- LARGE CONIFER SCREENING TREE
- MEDIUM SCREENING TREE
- MEDIUM FLOWERING TREE
- MIXED PERENNIALS, SHRUBS, GRASSES AND SUCCULENTS
- EVERGREEN HEDGE
- SLOPE PLANTING



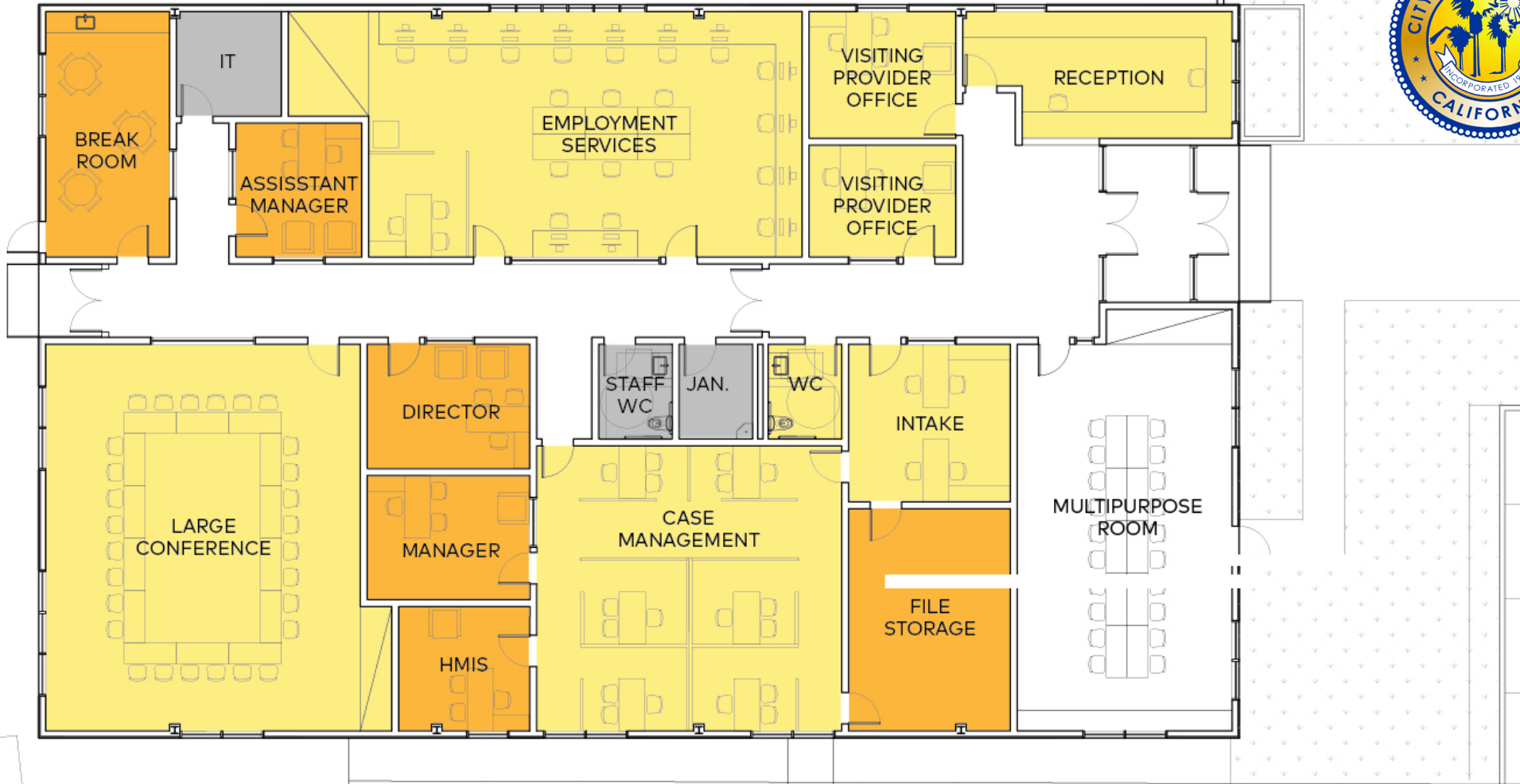
Aerial View from West



Please note that colors and graphics have not been decided. We have drawn preliminary inspiration from inspiring images of Palm Springs – of its beautiful natural environment, the rich modernist architectural heritage, and cultural influences.



Building 8 Floor Plan



LEGEND

- STAFF
- RESIDENT USE
- HEALTH AND WELLNESS
- KITCHEN
- SUPPORT
- PUBLIC AND COMMON AREA

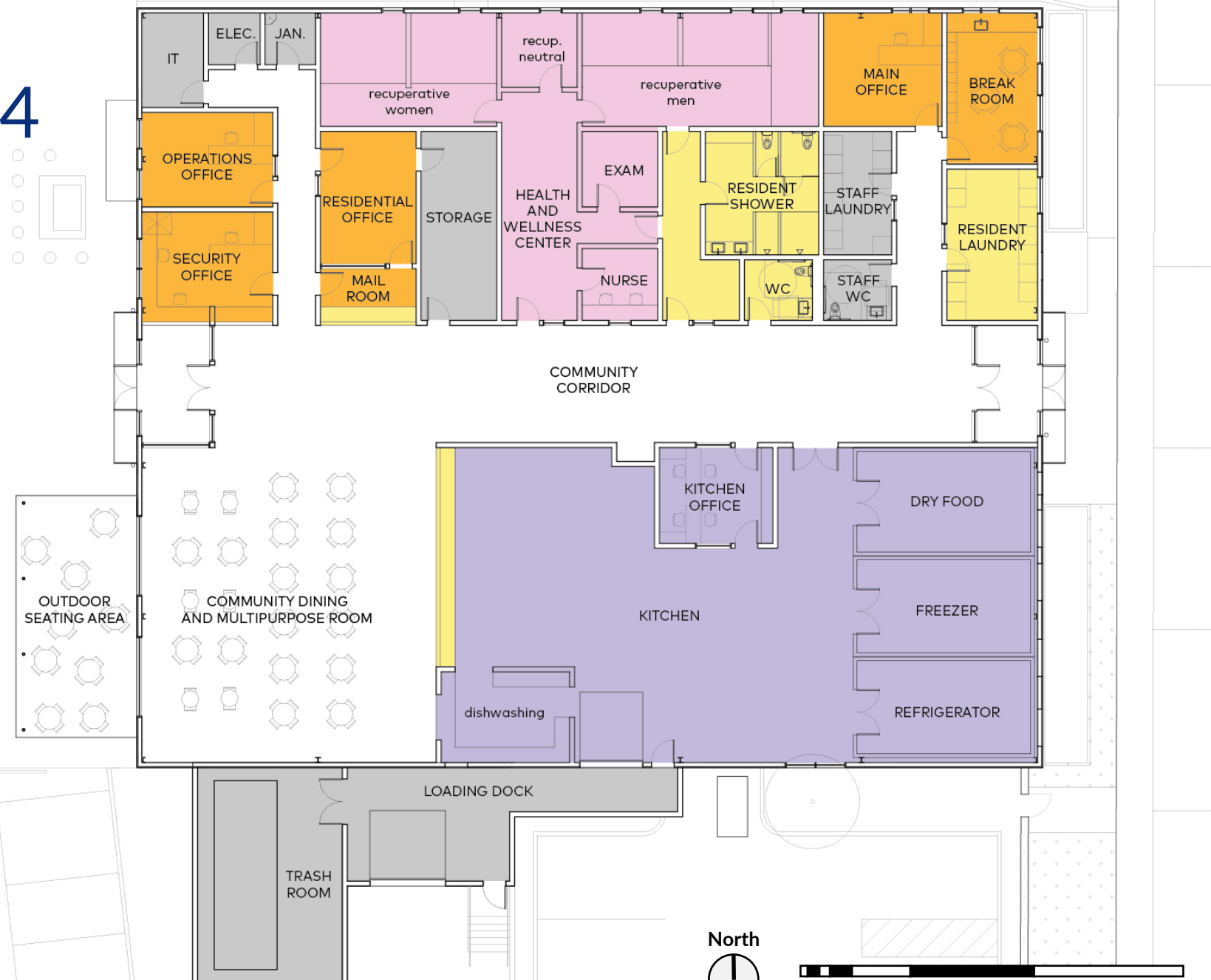
North



1 3 5 10 20 30 feet

Building 24

Floor Plan



LEGEND

- STAFF
- RESIDENT USE
- HEALTH AND WELLNESS
- KITCHEN
- SUPPORT
- PUBLIC AND COMMON AREA





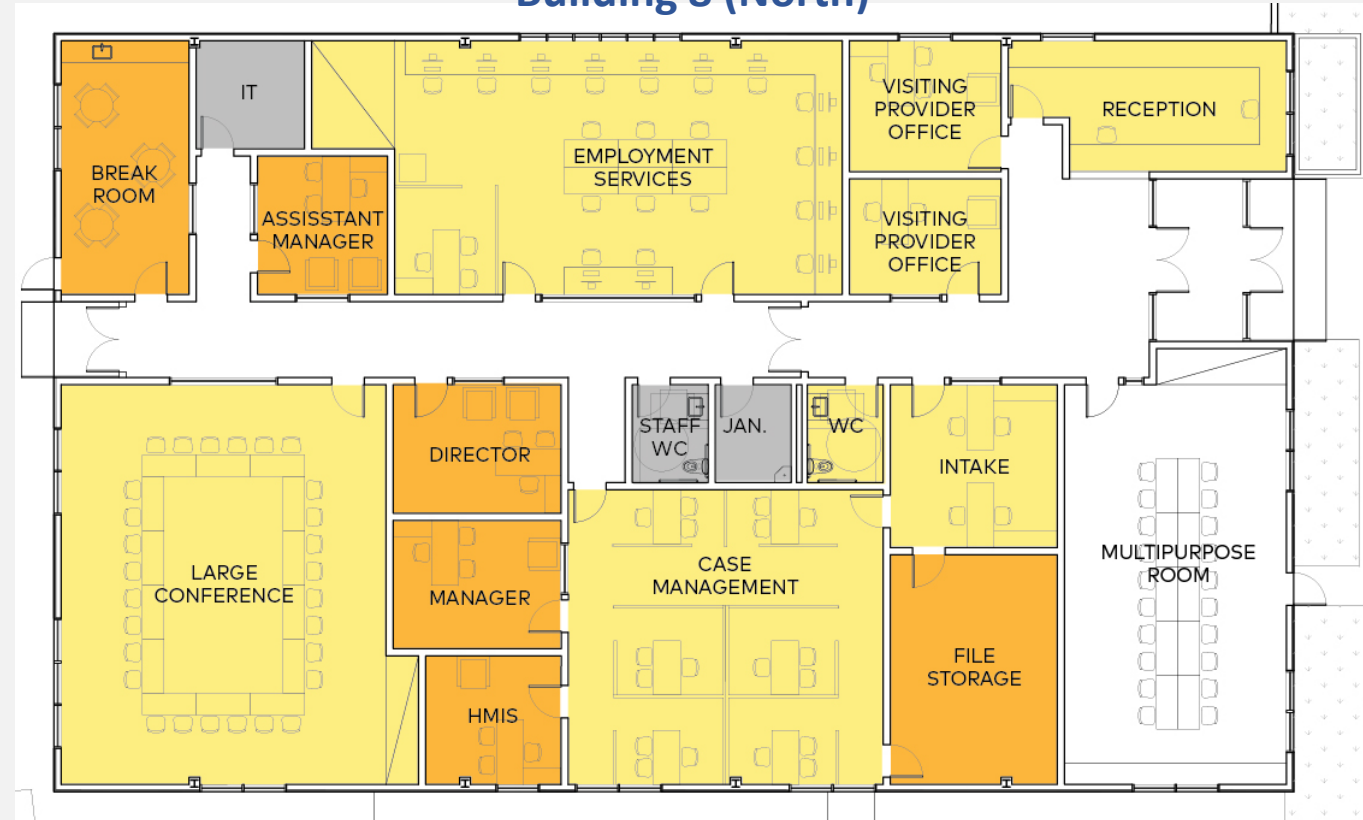
View of Buildings 8/24 from McCarthy Road



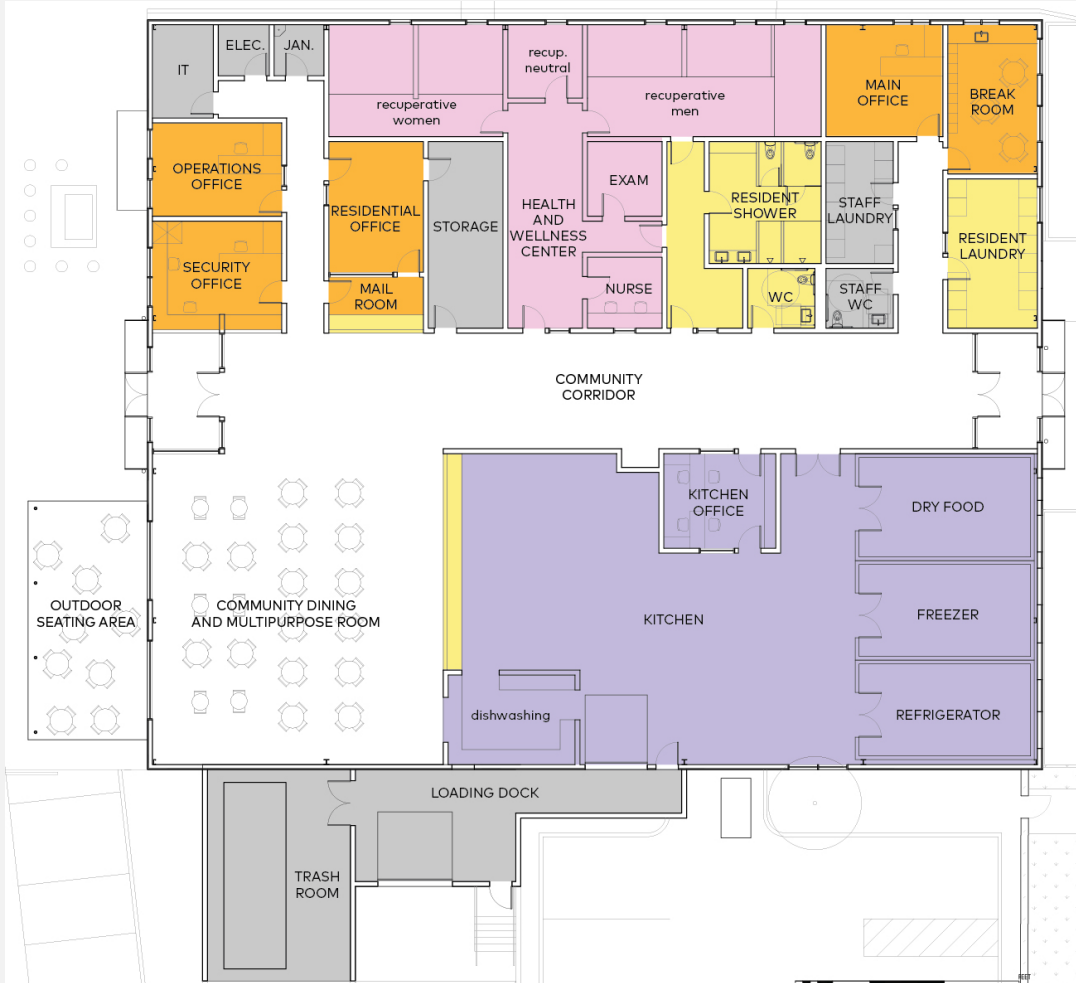
Please note that colors and graphics have not been decided. We have drawn preliminary inspiration from inspiring images of Palm Springs – of its beautiful natural environment, the rich modernist architectural heritage, and cultural influences.

Breakout Session

Building 8 (North)



Building 24 (South)



1. As locals, what are your thoughts on site access, pedestrian traffic, and safety in and around the campus?
2. What would make you feel more welcome at the campus if you were a resident?

LEGEND	
	STAFF
	RESIDENT USE
	HEALTH AND WELLNESS
	KITCHEN
	SUPPORT
	PUBLIC AND COMMON AREA



Questions & Clarifications



Next Meeting:

~~January 17th~~

January 10th